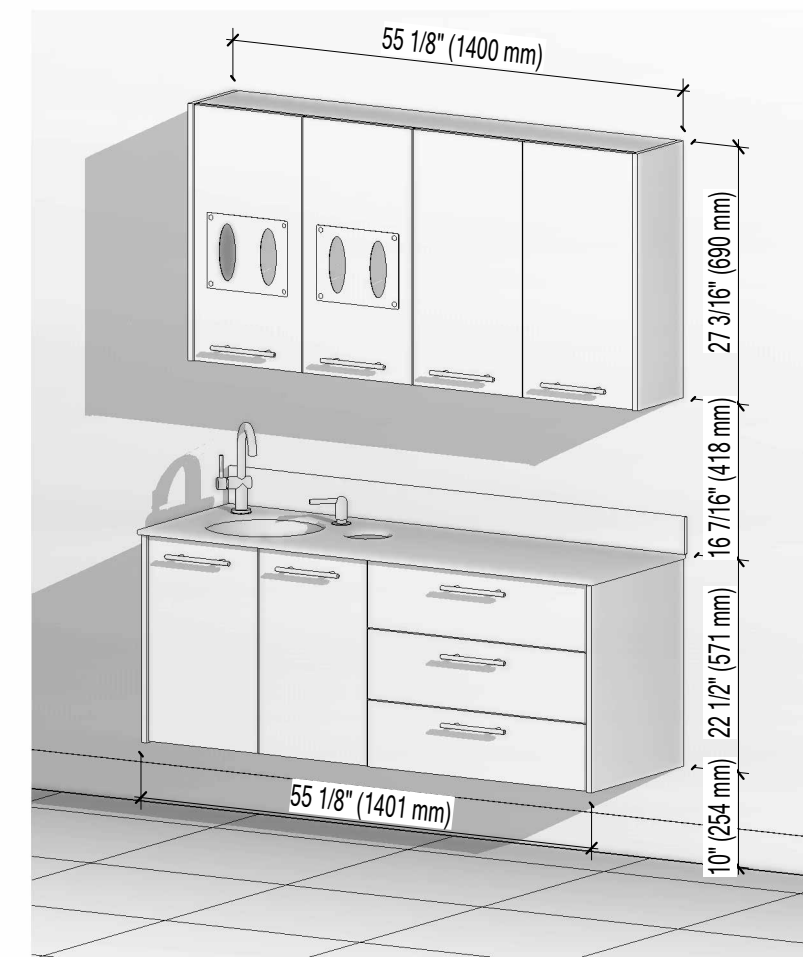
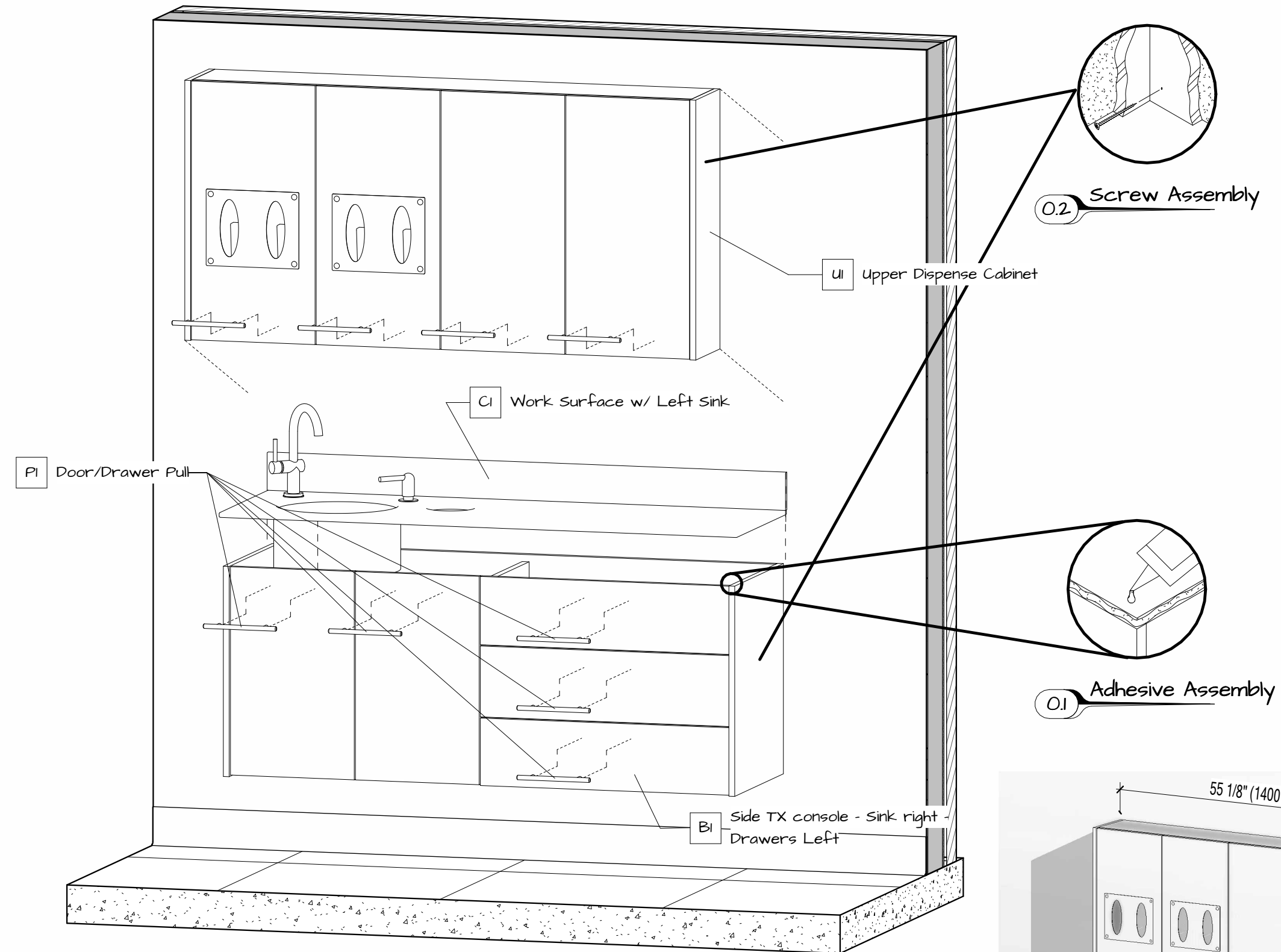
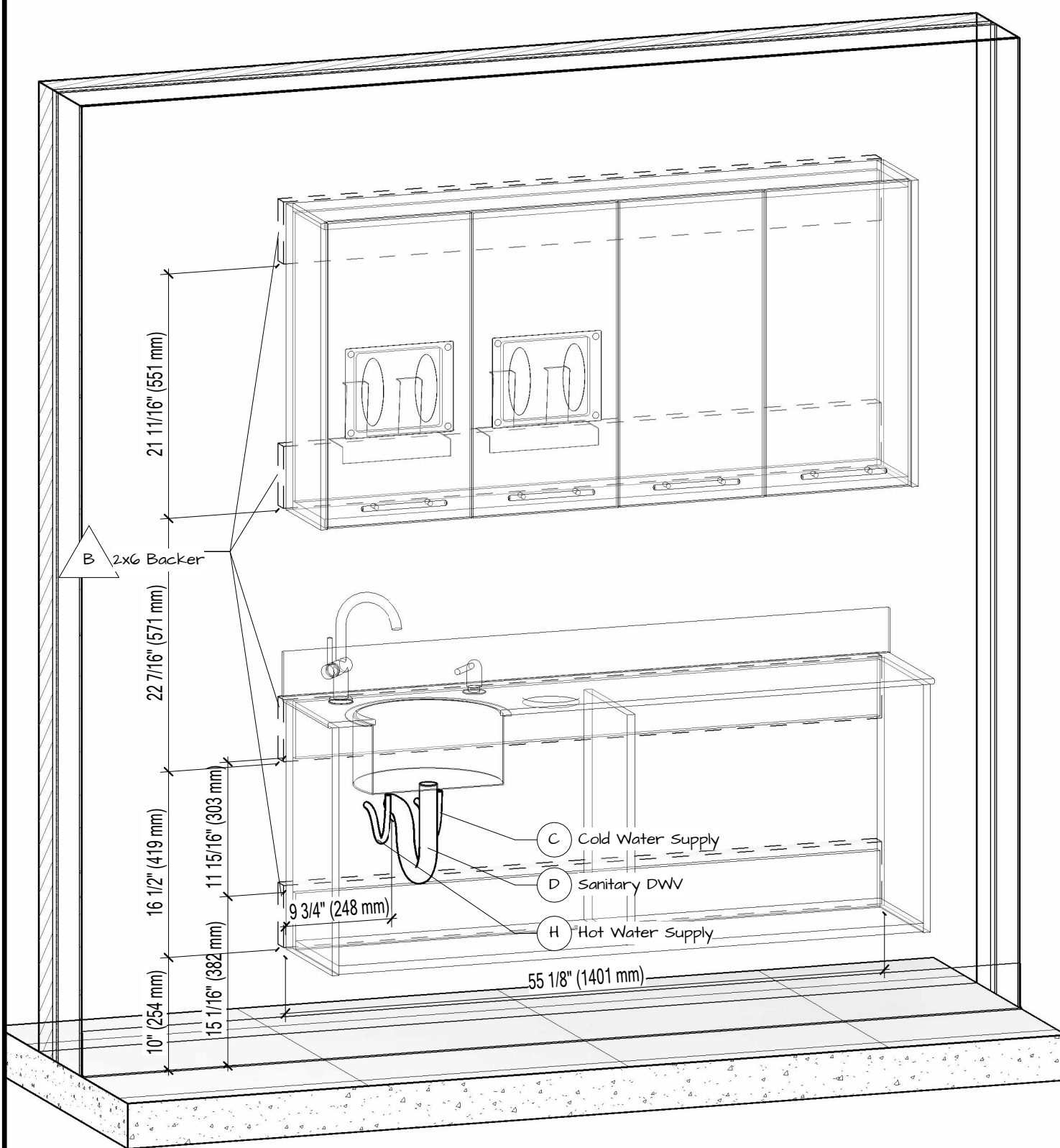


Packing List			
Mark	Model	Description	Qty
		Screws	12
B1	B31	Side TX console - Sink right - Drawers Left	1
C1	B31s	Work Surface w/ Left Sink	1
P1		Door/Drawer Pull	9
U1	U33	Upper Dispense Cabinet	1

Backers	
Description	Length
2x6 Backer	4' - 7 3/32"
2x6 Backer	4' - 7 3/32"
2x6 Backer	4' - 7 5/32"
2x6 Backer	4' - 7 5/32"
18' - 4 1/2"	

Utilities		
Mark	Description	Qty
H	Hot Water Supply	1
C	Cold Water Supply	1
D	Sanitary DWV	1



1 Utilities Location

2 Front Install

3 Final Installation View



NOVA Solutions Inc.
217-342-7070
sales@novasolutionsinc.com

Installation Drawing	
Title	ALSTC B31-H00-U33
Date	05/05/2024
Drawn by	Justin Martin