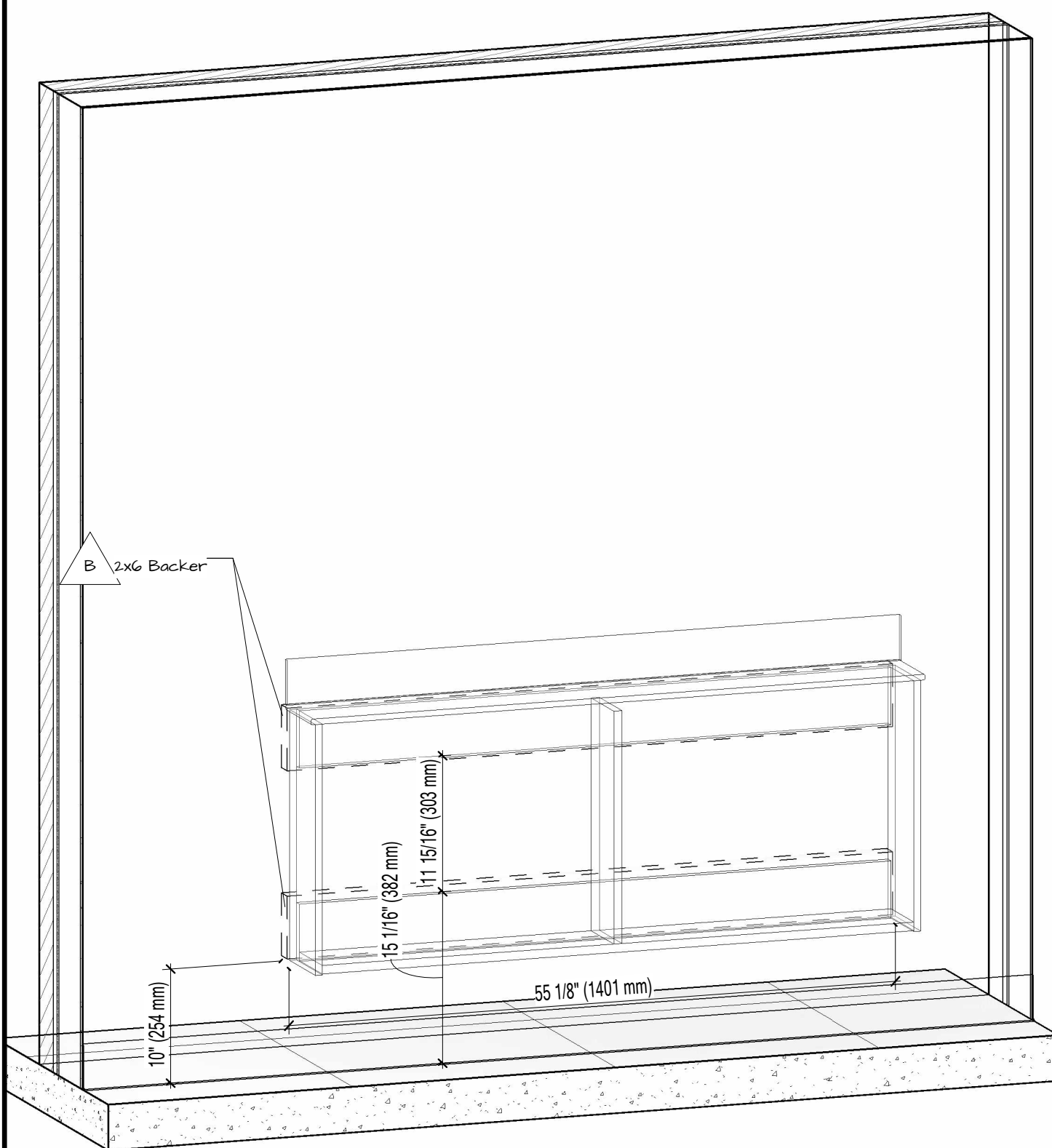


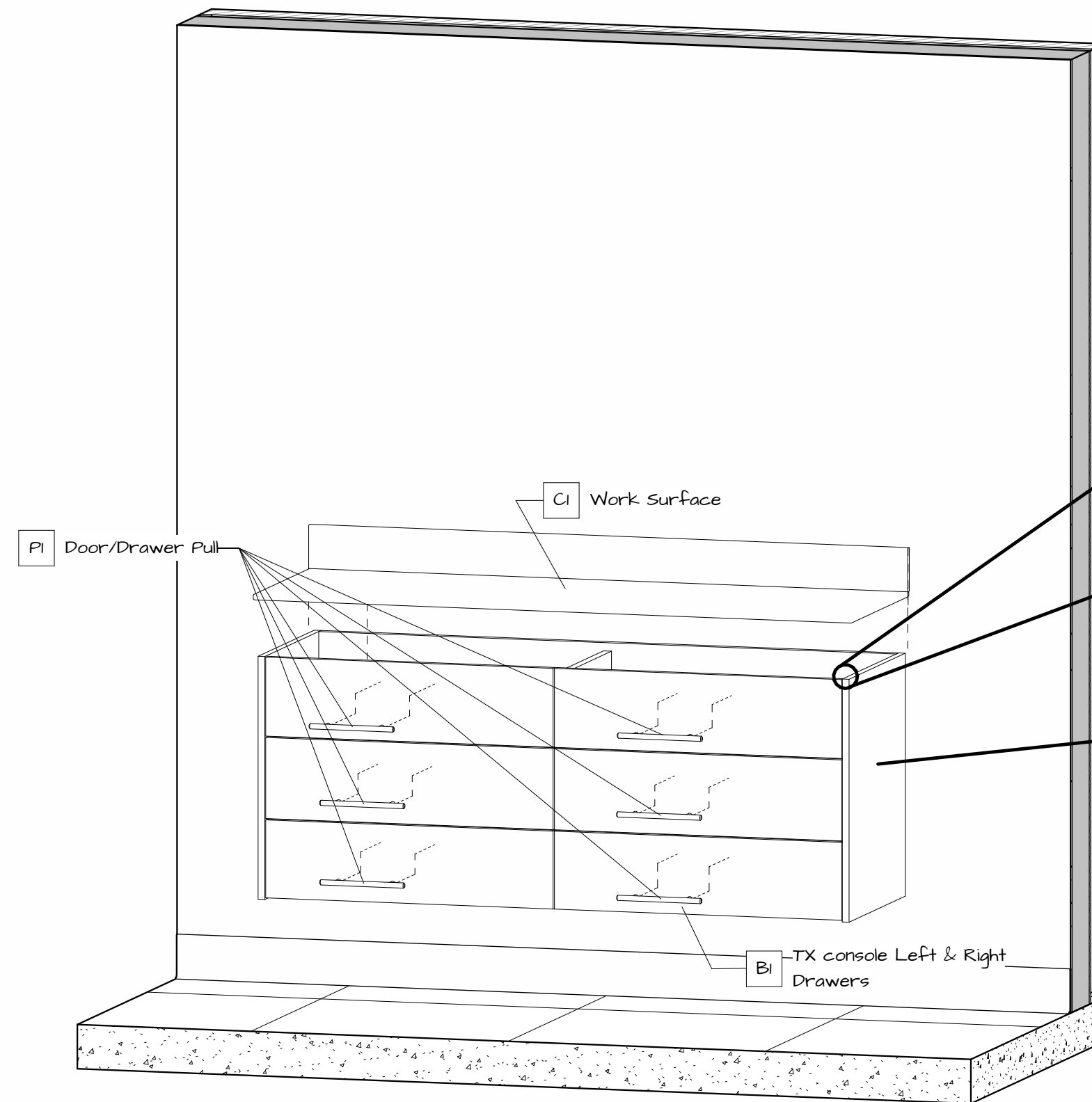
Packing List			
Mark	Model	Description	Qty
		Screws	6
BI	B33	TX console Left & Right Drawers	1
CI	B33s	Work Surface	1
PI		Door/Drawer Pull	6

Backers	
Description	Length
2x6 Backer	4' - 7 5/32"
2x6 Backer	4' - 7 5/32"
	9' - 2 5/16"

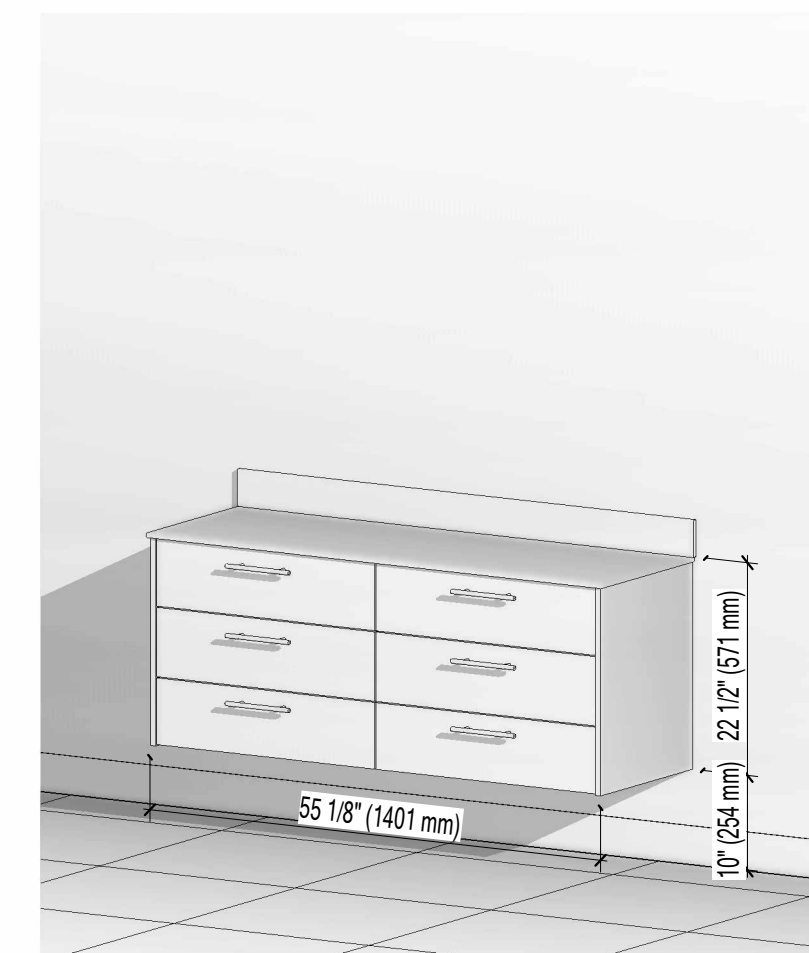
Utilities		
Mark	Description	Qty



1 Utilities Location



2 Front Install



3 Final Installation View



NOVA Solutions Inc.
217-342-7070
sales@novasolutionsinc.com

Installation Drawing	
Title	ALSTC B33-H00-U00
Date	05/05/2024
Drawn by	Justin Martin

I-1