

Item #: ALSTR 06A-000-000

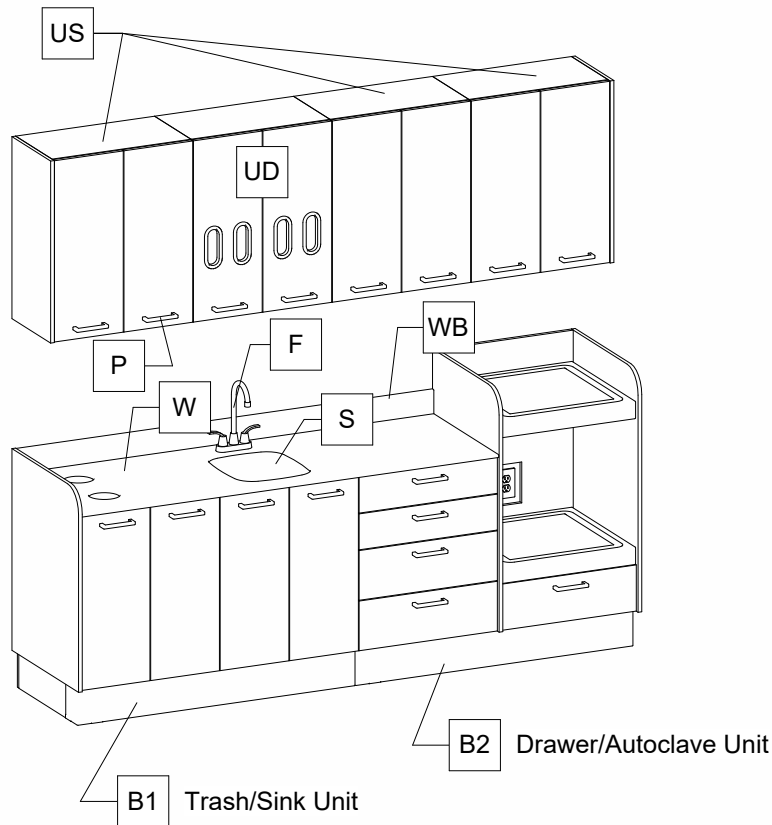
Install - Cover Page



Cover Page	I
Unpacking	I-0
Utilities Location	I-1
Base Cabinets	I-2
Achorbolt Layout Full Scale	I-3t
Upper Cabinets	I-4
Countertop & Hardware	I-5
Final Assembly	I-6
Sales Drawing Render	S-0
Sales Drawing	S-1

Item #: ALSTR 06A-000-000

Install - Unpacking



Packing List

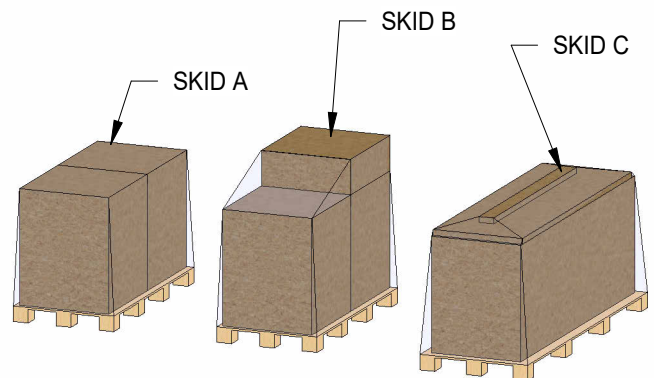
Mark	Description	Qty
Cabinetry		
B1	Trash/Sink Unit	1
B2	Drawer/Autoclave Unit	1
UD	Upper Dispense Cabinet	1
US	Upper Cabinet	3
W	Work Surface	1
WB	Backsplash	1
Hardware		
	#12 3" Wood Screws	32
	Sex/Sleeve Bolt	16
	Wedge Anchor Bolts	4
P	Door/Drawer Pull	17
Other		
	Strainer	1
	Tube of Caulk	1
F	Faucet	1
S	Undermount Sink	1

Skid A contains: Storage & Sink Cabinets pre-attached to each other and a Toe Kick.

Skid B contains: Drawer & Autoclave Cabinet pre-attached to each other and a Toe Kick.

Skid C contains: All Wall cabinets, work surface and back splash.

1. Remove all packing material.
2. REMOVE HARDWARE PACK FROM SINK BASE ON **SKID B**.

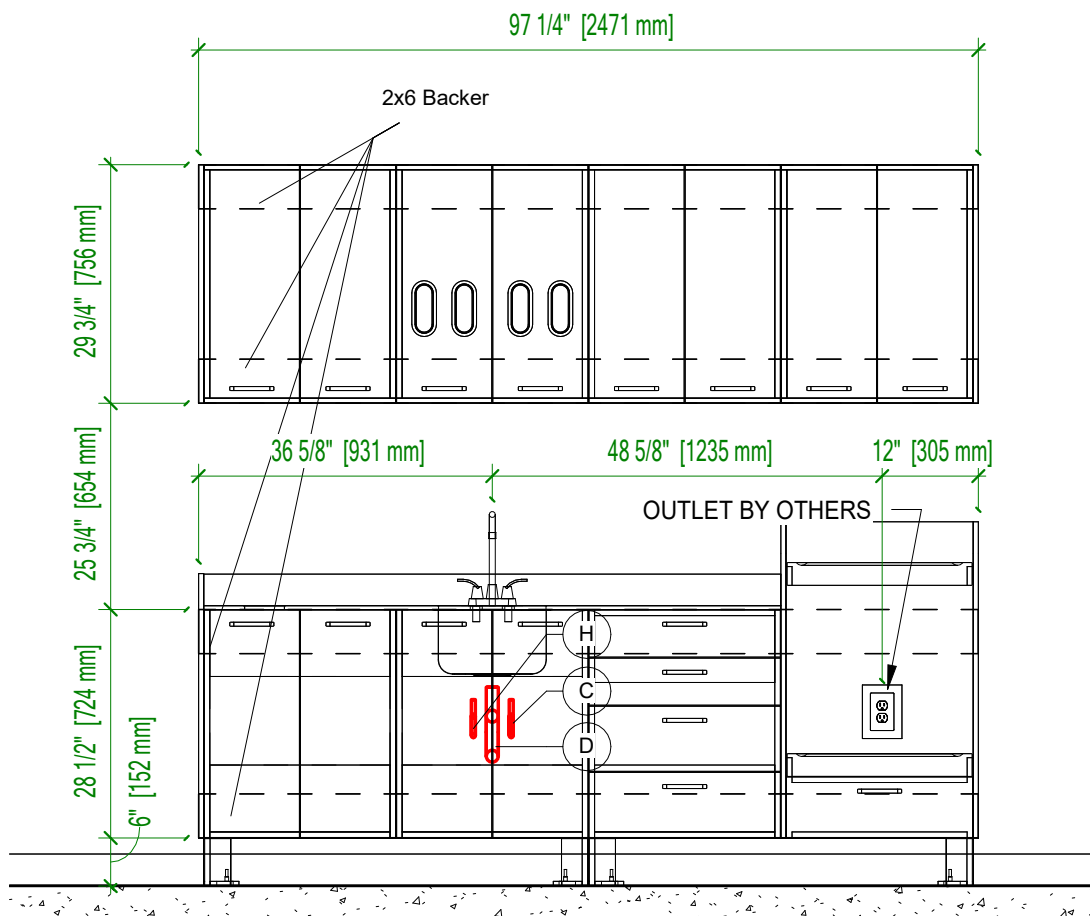


Item #: ALSTR 06A-000-000

Install - Utilities Location

Backers	
Description	Length
2x6 Backer	8' - 1 9/32"
2x6 Backer	8' - 1 9/32"
2x6 Backer	8' - 1 9/32"
2x6 Backer	8' - 1 9/32"
32' - 5 3/32"	

Plumbing Utilities -by others-		
Mark	Description	Qty
H	Hot Water Supply	1
C	Cold Water Supply	1
D	Sanitary DWV	1



Item #: ALSTR 06A-000-000

Install - Base Cabinets

INSTALL TOE KICK ASSEMBLIES

1. Using Template **Drawing I-3t**, Drill anchor bolt holes (3/8" dia x 2" min) into floor as the designated locations (shown in BLUE).

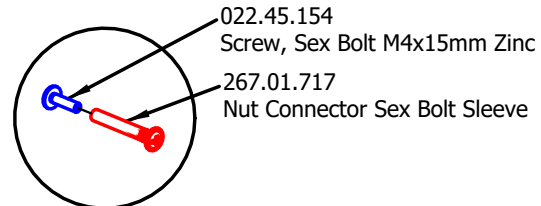
Note: Toe kick leveling glides can be adjusted (top-down access) with flat head or 7/32 socket. ALL LEVELING GLIDES ARE PRE-INSTALLED ON TOE KICKS

2. Place anchors through toe kick into drilled holes for all toe kick sections. **[Detail A]**

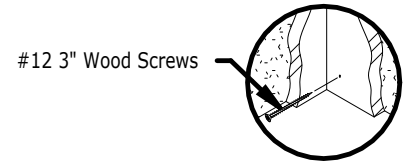
Note: Do not secure anchors to allow movement until final assembly/leveling is completed

3. Attach to B2 to B1 with sex/sleeve bolt set (4) **[DETAIL SSB]**

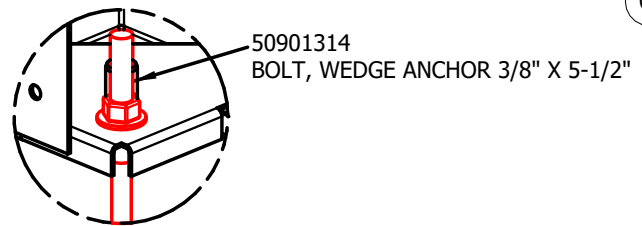
4. Attach to solid wall blocking/studs with #12-3" wood screws. **[DETAIL CWS]**



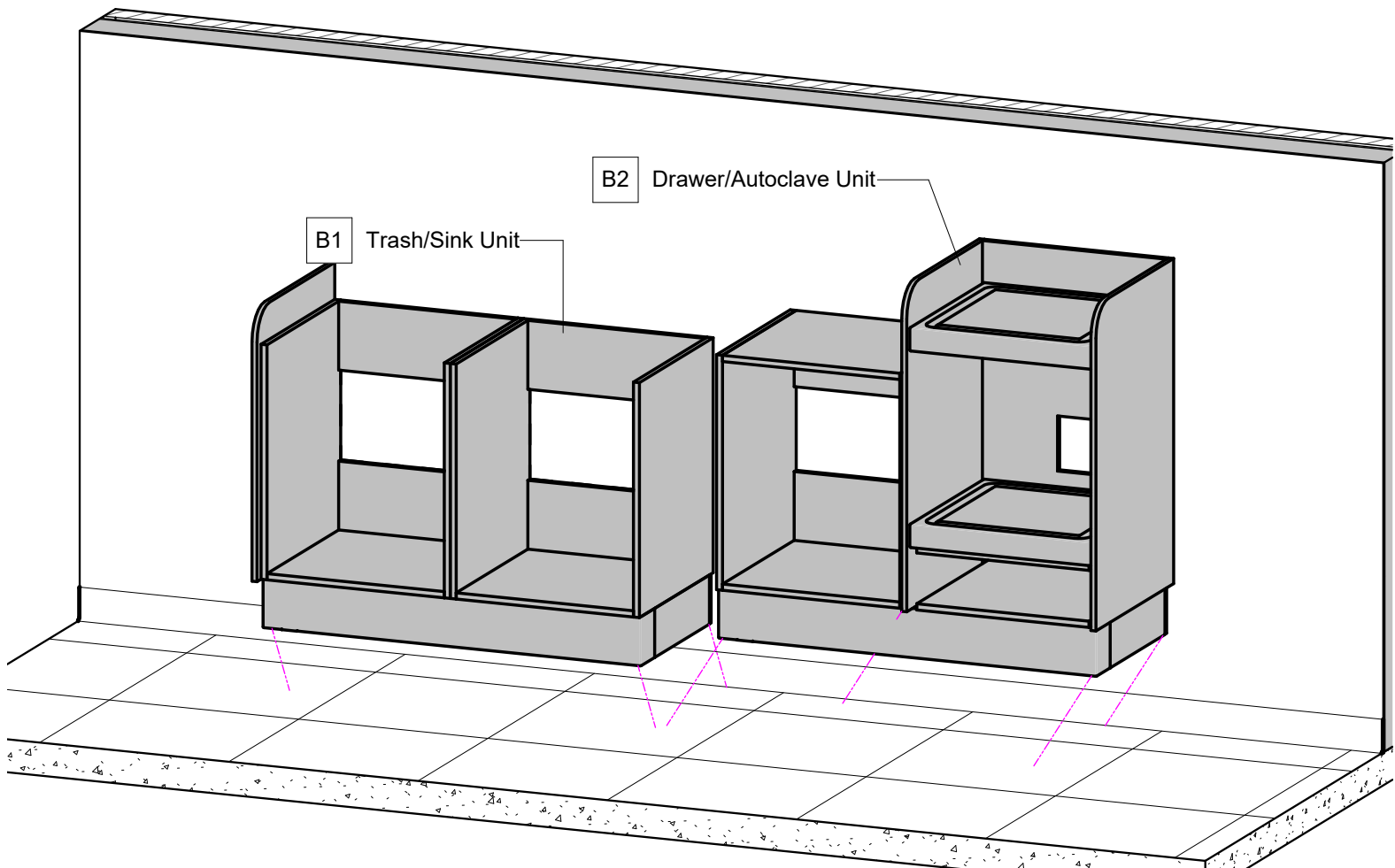
SSB

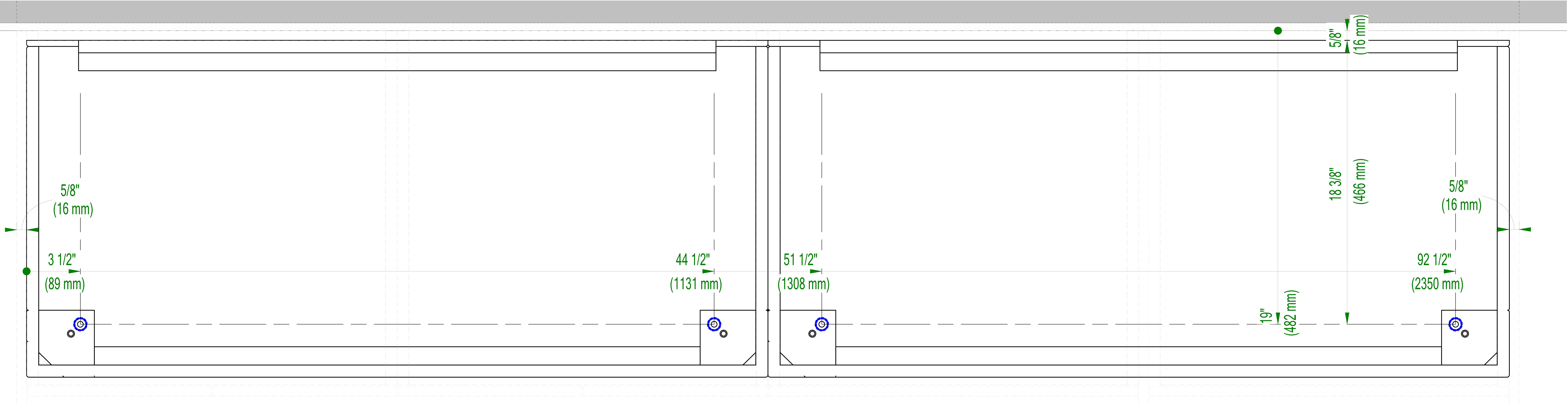


CWS



A

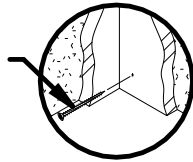




Item #: ALSTR 06A-000-000

Install - Upper Cabinets

#12 3" Wood Screws



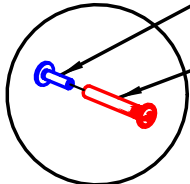
CWS

022.45.154

Screw, Sex Bolt M4x15mm Zinc

267.01.717

Nut Connector Sex Bolt Sleeve



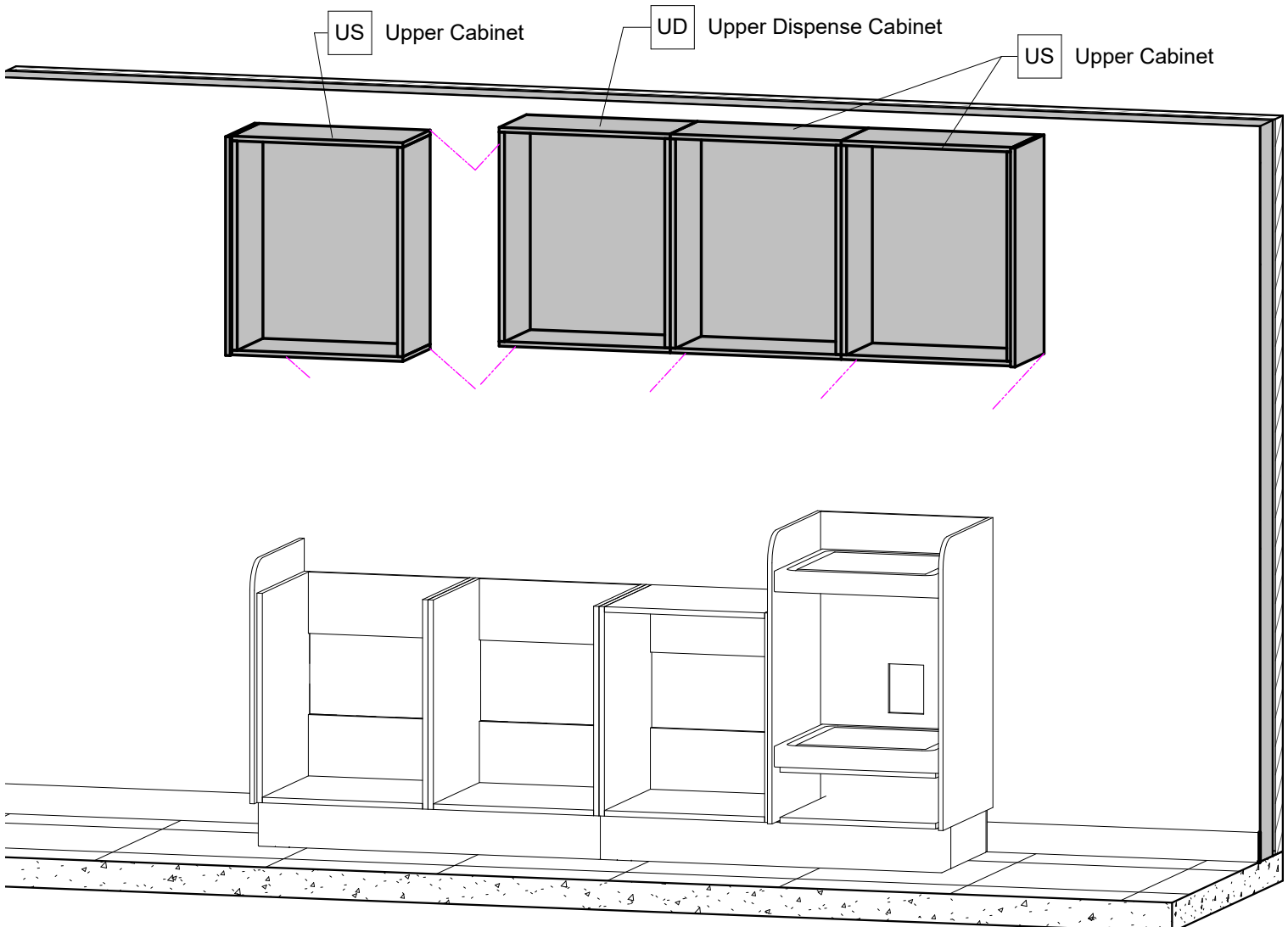
SSB

INSTALL BASE CABINET

1. Remove all doors & drawers.

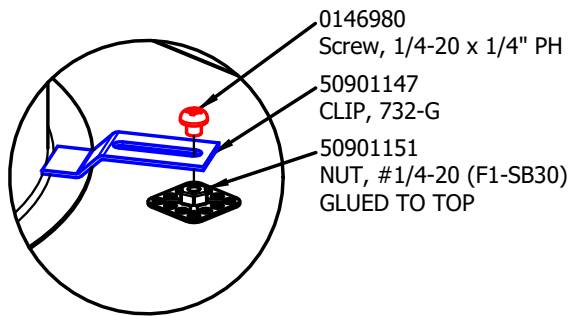
Doors/drawers are matching/coordinated sets. Keep track of where each was removed. Doors & drawers must be reinstalled in same configuration at end of assembly.

2. Place left most wall cabinet on wall as shown and attach to solid wall blocking/studs with #12-3" wood screws. **[DETAIL CWS]**

3. Repeat for remainder for remainder of wall cabinets as shown and connecting them to each other with sex/sleeve bolt set **[DETAIL SSB]**


Item #: ALSTR 06A-000-000

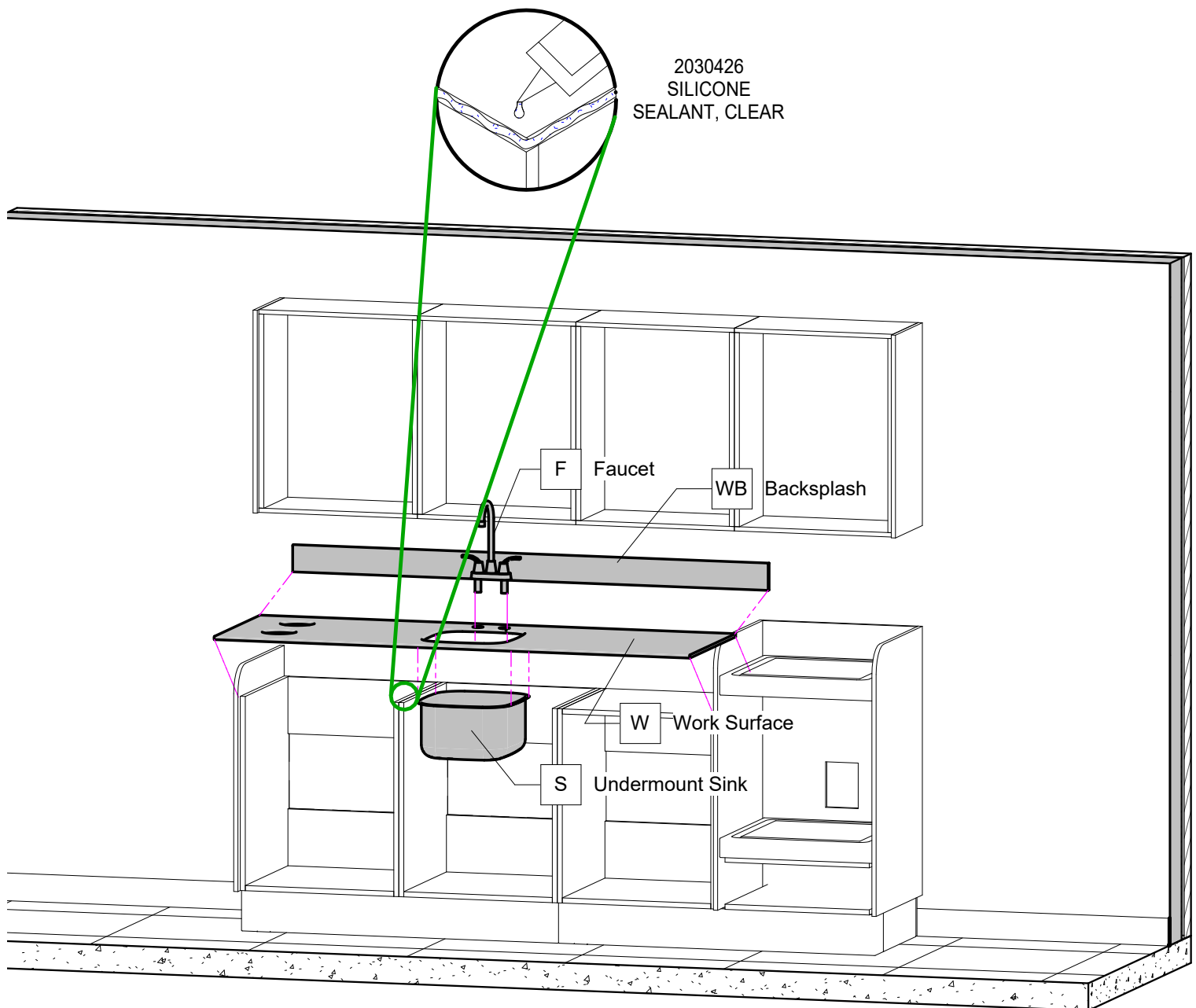
Install - Countertop & Hardware



INSTALL COUNTERTOP TO SINK BASE CABINET

1. Install Sink, Faucet, Strainer.
Apply provided silicone to the sink prior to installing
2. Place Countertops on respective base cabinets.
Apply provided silicone to secure work surface to base cabinet

****NOTE: FINAL PLUMBING CONNECTIONS BY OTHERS****



Item #: ALSTR 06A-000-000

Install - Final Assembly

****NOTE: FINAL ELECTRICAL & PLUMBING CONNECTIONS BY OTHERS****

1. REINSTALL DOORS/DRAWERS IN ORIGINAL POSITIONS FROM WHERE THEY WERE REMOVED.
2. Attach Door/Drawer Pulls and remaining components as needed.
3. ADJUST TOE-KICK LEVELERS AND TIGHTEN ANCHOR NUTS.
4. CHECK FOR ALIGNMENT OF DOORS & DRAWERS, FINAL ADJUSTMENTS MAY BE NECESSARY.

