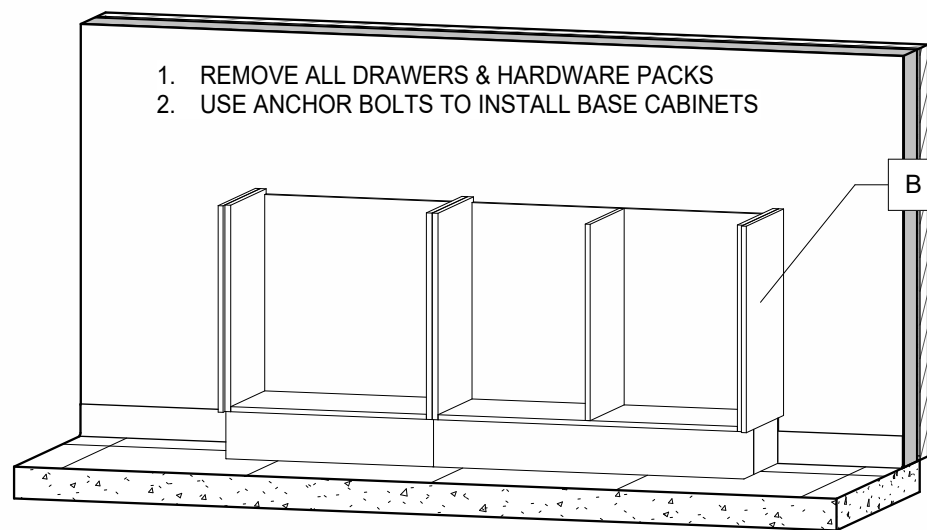


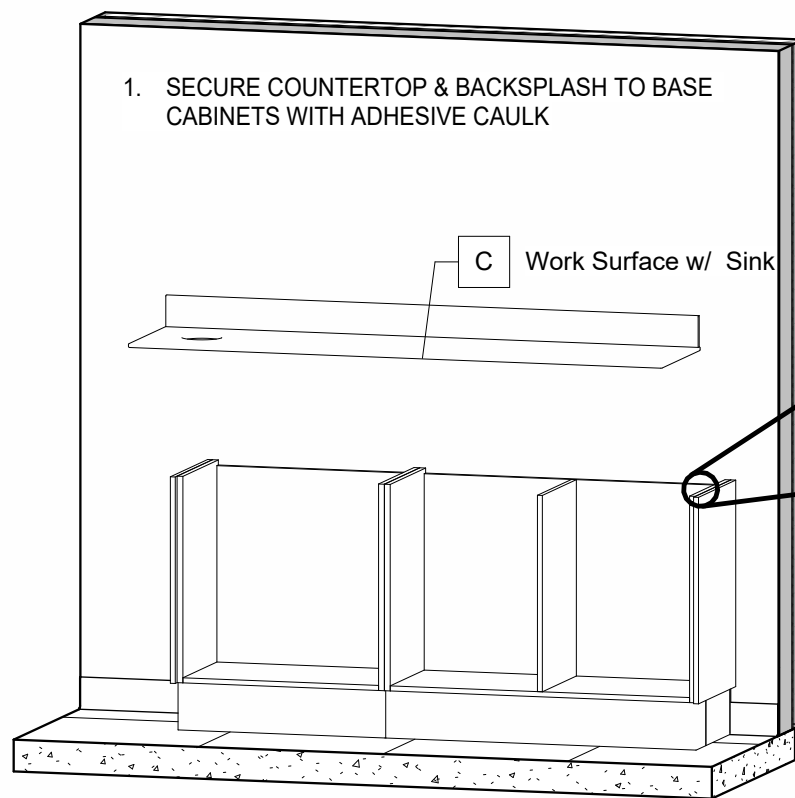
Backers	
Description	Length
2x6 Backer	4' - 7 1/8"
2x6 Backer	4' - 7 1/8"
	9' - 2 9/32"

1 Utilities Location



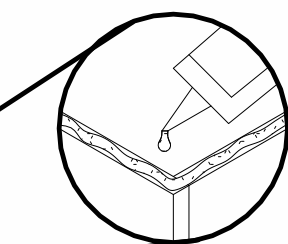
1. REMOVE ALL DRAWERS & HARDWARE PACKS
2. USE ANCHOR BOLTS TO INSTALL BASE CABINETS

B Side Console Base



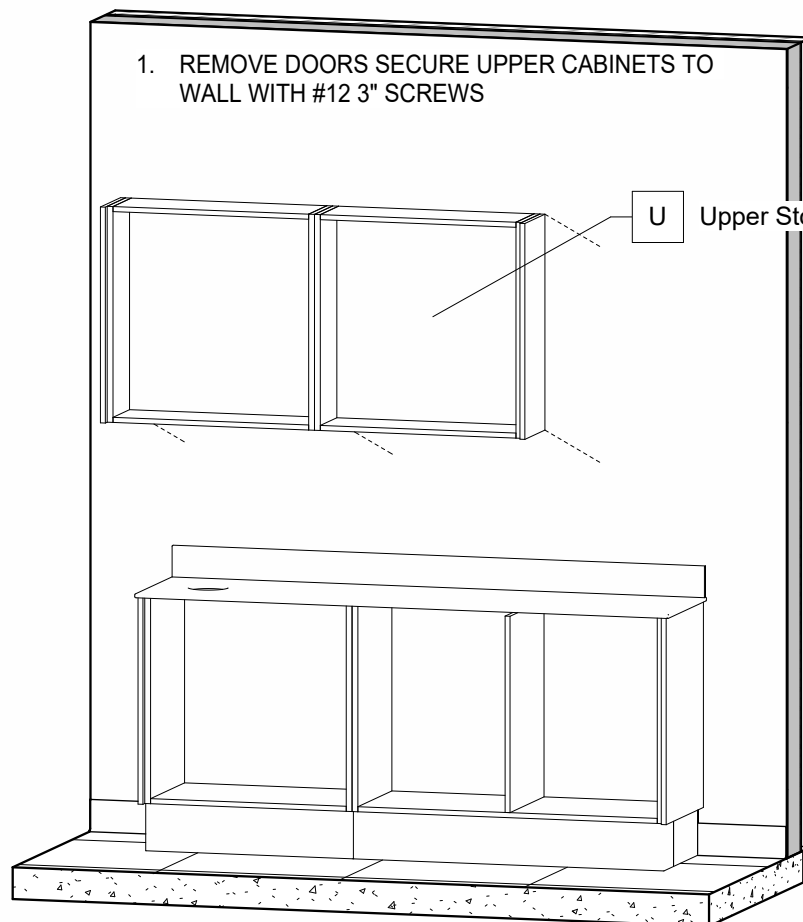
1. SECURE COUNTERTOP & BACKSPLASH TO BASE CABINETS WITH ADHESIVE CAULK

C Work Surface w/ Sink



Adhesive Assembly

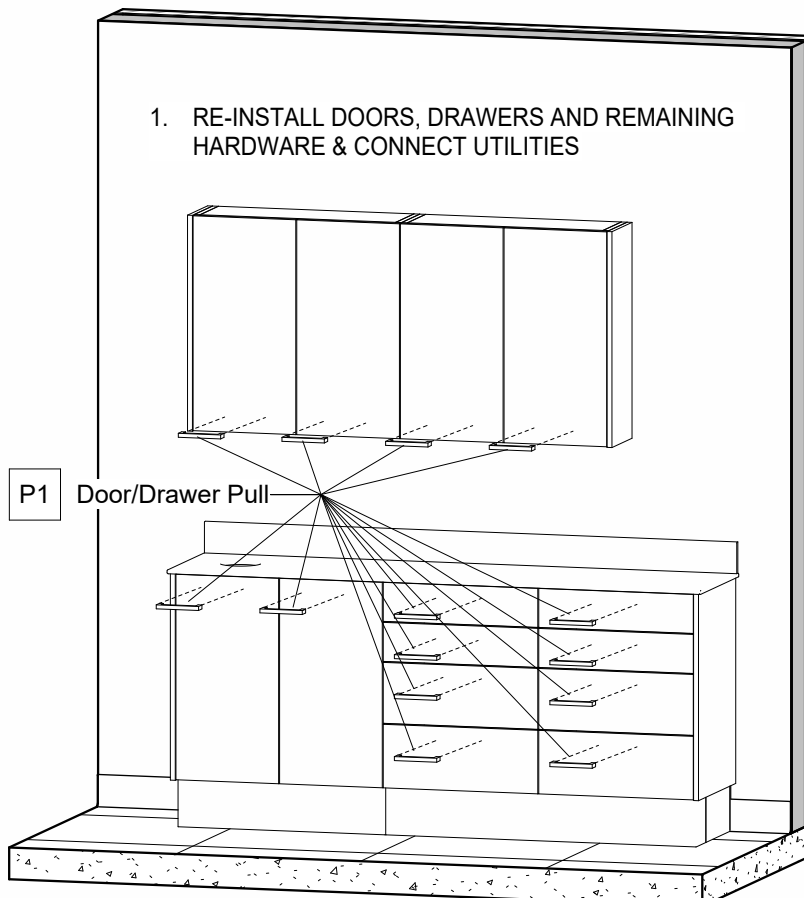
2.2 Install CounterTop



1. REMOVE DOORS SECURE UPPER CABINETS TO WALL WITH #12 3" SCREWS

U Upper Storage Cabinet

2.3 Install Upper Cabinets



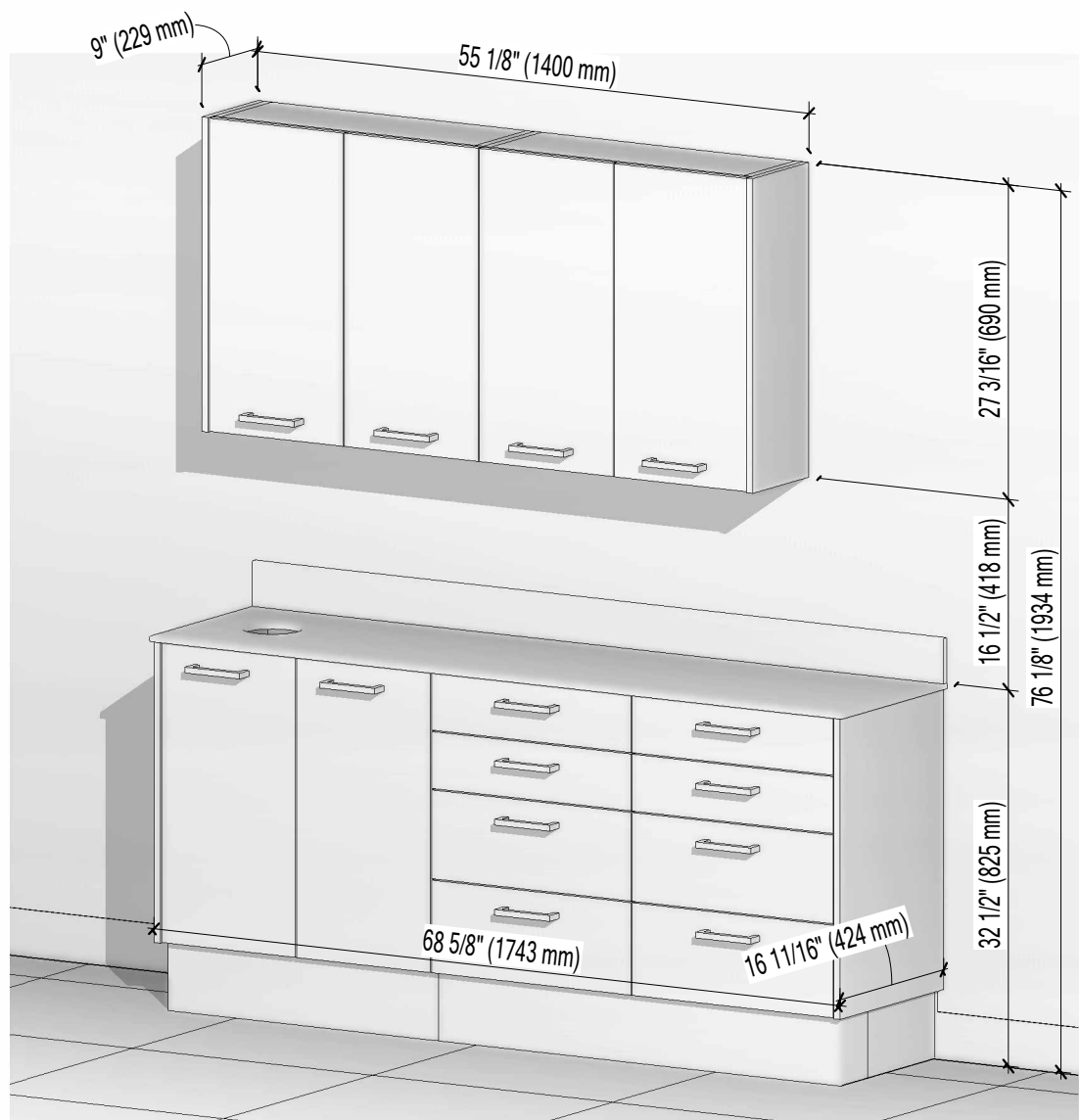
1. RE-INSTALL DOORS, DRAWERS AND REMAINING HARDWARE & CONNECT UTILITIES

P1 Door/Drawer Pull

2.4 Install Hardware

Packing List

Mark	Description	Qty
	#12 3" Wood Screws	6
	Anchor Bolts	8
	Tube of Caulk	1
B	Side Console Base	1
C	Work Surface w/ Sink	1
P1	Door/Drawer Pull	14
U	Upper Storage Cabinet	1



3 Final Installation View



NOVA Solutions Inc.
217-342-7070
sales@novasolutionsinc.com

Installation Drawing

Prepared for: Nova Solutions Inc.

LINEA

Project SIDE TREATMENT CENTER

Item # ALSTC 03M-000-U35

Drawn by: Justin Martin

09/27/24

I-1

Rev: 1